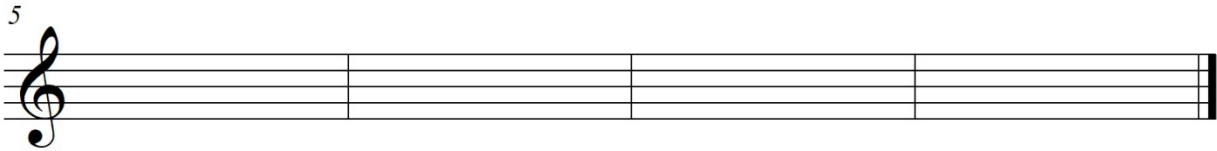
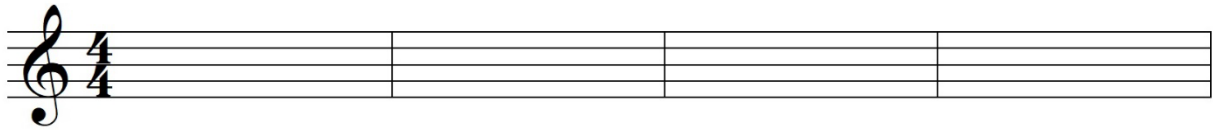


Name: \_\_\_\_\_

**Assignment 2-1**

Using quarter notes, half-notes, and eighth notes, write a 4-measure ascending melody. Use any MAJOR key.

- a) Make the first two measures an antecedent phrase and end it with a dominant harmony (ending on ti, re, or sol).
- b) Begin the first half of the consequent phrase with identical notes to the first phrase, but the last portion should reflect a tonic harmony. Use “do” as the final note, indicating a PAC.



Follow the same instructions as the previous exercise but do so in a MINOR key. Whichever melodic shape you used for your previous melody, do a contrasting melodic shape. (For example, if the previous melody was mostly an arch shape, maybe try an ascending shape for this melody)

