

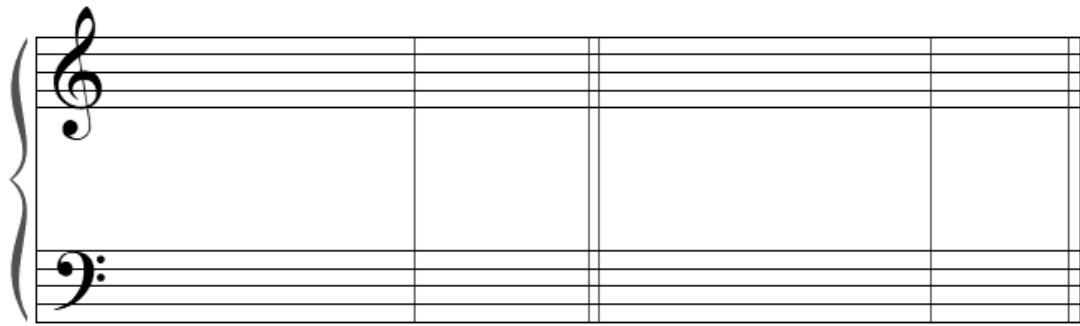
Ch. 13: Neapolitan 6<sup>th</sup> Chords

Name: \_\_\_\_\_

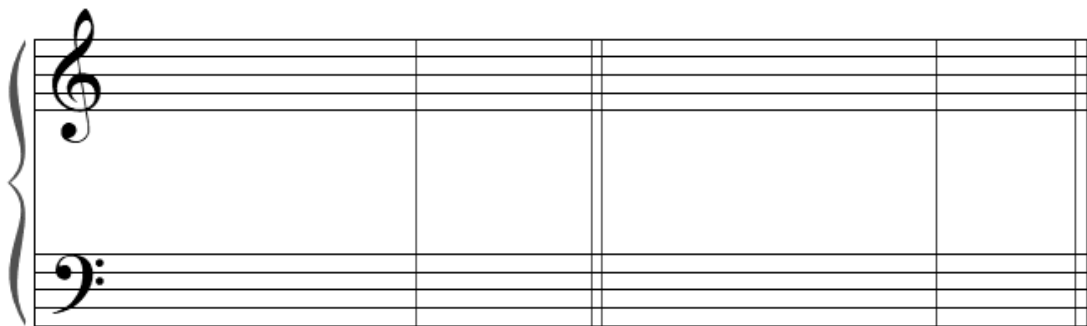
Assignment 13-1

Follow the steps below to complete the progressions listed.

1. Complete the grand staff (need I remind you that this requires treble clef, bass clef, and the brace to connect the two staves)
2. Write in the key signature.
3. In whole notes, fill in the bass line (fa – sol – do), then
4. In whole notes, fill in the soprano line above with (ra – ti – do) in the top staff.
5. Do not forget the basics of musical legibility. (Need I also remind you that you should strive to have perfect vertical alignment between voices. Put your soprano note DIRECTLY above your bass note. Fill in your alto and tenor accordingly, but in a perfect stack).
6. In whole notes, fill in the alto and tenor lines. Remember to double the bass pitch in the N6 chord.
7. Remember that the soprano syllable “ra” will always be a chromatic pitch and will require an accidental.
8. As usual, keep each voice comfortably within its range.



a minor: N6 V i g minor: N6 V i



d minor: N6 V i c# minor: N6 V i